

SPRINTURF®

MAINTENANCE MANUAL

SAFETY

SPRINTURF RULES

- Molded cleats or other athletic shoes only
- No sharp objects, including tent stakes, corner flags or other objects that can penetrate the surface of the field
- No food items
 - Including gum and sunflower seeds
- No tobacco products of any kind
- No sport drinks or liquids other than water
- No pets
- No bicycles or other unapproved vehicles
- Approved athletic equipment only

SPRINTURF®
Synthetic Turf Systems
1-877-686-TURF www.sprinturf.com

PERFORMANCE



SERVICE



Table of Contents

Introduction.....	2
Break-In Period	3
Grooming	4 - 5
Approved Grooming Equipment.....	6 - 7
Removal of Debris	8
Cleaning	9
Disinfecting Your Field	10
Field Markings	10
Repairs	11
Snow Removal	12
Keep Your Field In Pristine Condition	13
Suggested Rules	14

Forms

Contact Information Update	15
Repair Request Forms	16 - 21
Routine Maintenance Log.....	22 - 29

Congratulations on the purchase of your new Sprinturf synthetic turf system and welcome to the Sprinturf family!

At Sprinturf, customer delight is our number one goal and with every opportunity, we strive to ensure your complete satisfaction. It is important that you feel Sprinturf is a true partner and not just a vendor to your organization.

While this manual will provide a lot of valuable information, if at any time you have a specific question or concern about your new field, please do not hesitate to contact us directly at **888-524-6017**.

Your new Sprinturf sports field requires much less maintenance and significantly more playability than a natural grass field. In fact, many owners find that usage will double and often triple with the introduction of a Sprinturf field. Owners also recognize that shifting activities on-to their Sprinturf field will allow the natural grass fields a longer resting period than before which, in turn, keeps them in better shape as well.

While maintenance on a synthetic field is greatly reduced from that of natural grass, a Sprinturf synthetic turf system is not maintenance-free and will require a few hours of attention each week to keep it in pristine condition. This manual will provide simple steps to ensuring proper care and maintenance of your new field and offer tips for maximum playability.

For additional information, please visit the Sprinturf website at www.sprinturf.com or email customer care at customercare@sprinturf.com



BREAK-IN PERIOD

Much like a fine leather product, your new Sprinturf field does have a normal break-in period of several months. The hours of play and amount of rainfall will impact the time it takes for the new infill to settle into the fiber system and provide optimum playing conditions.

1. Expect infill levels to drop during this time. This is considered normal compaction of the infill and is part of the system design.
2. Occasionally, dust may accumulate on the fiber due to environmental conditions or nearby construction. Both the fiber and infill will be naturally flushed clean during rainfall. This will also improve drainage capabilities of the turf system and typically clear the system of small debris.
3. The break-in period for your new field is much like that of a new carpet in your home. Use your approved groomer or sweeper on the field more regularly during the break in period to collect any loose fibers leftover from installation. Keep in mind that there are thousands of pounds of fiber on the field and loose fibers are abundant in the system from cutting that takes place during installation. Even after the break-in period, you will notice loose fibers during regular maintenance your field. This is normal and should be expected.



GROOMING THE FIELD

Grooming techniques are taught by a certified Sprinturf representative when your new Sprinturf field is completed. We highly recommend choosing one staff member to be responsible for the field maintenance and necessary equipment and for anyone who may groom to attend the training.

Liken your new Sprinturf field to that of carpet in your home. Cleaning debris from the field and using your Sprinturf-approved grooming equipment will help to keep your fibers standing tall and give the field a plush appearance. Always use a nylon, soft bristle drag system approved or designed by Sprinturf.

For a regulation size football field, grooming typically takes 2 hours and consists of driving a utility vehicle equipped with an approved drag brush attachment back and forth across the field to stand or “brush” the fibers in your system. For best results, grooming should be done during dry weather and when the field is dry to the touch.



How often should you groom?

New fields should be groomed once a week for the first two months upon installation to remove excess or loose fibers. Following the break-in period, Sprinturf recommends grooming your field following approximately 100 hours of use or no less than once per month, whichever is first.

Grooming a rectangular field

Proper grooming is dependent upon your field layout and should be done in the same direction as the seams to avoid excess wear on seam areas. For a field that is rectangular in shape, such as football, soccer, lacrosse or field hockey, groom the field from sideline to sideline, alternating the direction of travel as shown in the photo to the right.

For example: Begin grooming in the direction of the home side and return towards the visiting side on successive grooming cycles.



Grooming a baseball field

For a baseball or softball field layout, groom base paths beginning at home plate, moving to first base, second base, third base and back to the home plate area similar to the way an athlete would run the bases. Groom your outfield, foul areas and warning tracks as shown at right. If you are unsure on the directionality of your field, contact your Sprinturf Customer Care representative.

Infill Displacement

In areas that receive significant and repetitive play such as goal mouths, foul lines, and penalty kick areas, you may notice that the infill will become displaced. This typically occurs over a long period of time in concentrated areas of the field due to kicking or other repetitive motions on the surface. If at any time the infill becomes displaced, simply brush it back into place using a medium stiff, nylon bristle brush to ensure an even playing surface with the remainder of the field.

It is important to monitor these high use areas on a regular basis to ensure that proper infill levels are maintained across the entire surface. Not only can an area low on infill damage the turf fiber and backing in the area from excessive wear and tear, but it may also present a safety hazard.

Infill displacement can also occur when using equipment such as a snow plow on the surface. While the plow is not intended to touch the surface during plowing, often times infill will inadvertently be picked up during the process. If this happens, simply brush or re-disperse the infill evenly onto the field once the snow has melted.



Static Electricity

Static electricity is the accumulation of electrical charges on the surface of a material. It is most likely to form when the air is dry or the humidity is low. While it is not harmful, static can be an annoyance to athletes on the field. Find a remnant of your synthetic turf approximately 3' wide and 3-6' long and soak the piece in water until it's saturated. Attach the turf to your utility vehicle so that the fiber of the remnant and that of your surface are face to face. Drag it across your field as in a typical grooming pattern. Be sure to keep the piece of turf wet at all times to neutralize the charge (re-wet the turf roughly 5-6 times for a full size field). For extreme cases, a solution of 1 cup fabric softener to 5 gallons of water can also be used.

Grooming after Special Events / Concerts / Graduation Ceremonies

It is a good practice to get in the habit of occasionally using a drag magnet on your field to catch debris such as bobby pins, earrings or other metallic items that may land on your field of play. These items are potential safety hazards and could cause a laceration or more serious injury if protruding from the surface.

APPROVED GROOMING EQUIPMENT

Typically, Sprinturf athletic fields are specified with an approved piece of grooming equipment. If your field was not specified with equipment or you are in need of replacing that which came with your field, Sprinturf recommends the following drag broom systems for regular maintenance of your field.

Note: Sprinturf does not recommend the use of tines for our synthetic turf systems.

If tines have been purchased or specified for your field, please consult your Sprinturf Customer Care manager for specific usage guidelines. Tines are typically recommended for systems with a high percentage of sand and therefore not needed for most Sprinturf fields. Overuse can cause unnecessary stress on the fiber system and will not improve upon the typical grooming process.

Gandy® Sweep Master Turf Brush

<http://www.gandy.net/turfbrush.php3>



GreensGroomer® Synthetic Sports Turf Groomer

<http://www.greensgroomer.com/synthetic>



TC1400®

http://www.smgequipment.com/product_p/tca1400.htm



Always use caution when putting any type of vehicle or equipment onto your field. Sharp turns, excessive speed and overweight vehicles can easily damage the surface. Sprinturf requires the use of turf tires on all vehicles used on the surface. All tires should be inflated to the manufacturer's recommended tire pressure, typically around 15-20 psi.

No 6-wheeled vehicles are permitted.

Club Car® - Carryall 295 (4 wheel models only)

- Gas/Diesel
- Hitch
- Turf Tires



John Deere® Gator™ (4 wheel models only) Model # TS or TX

- Gas/Diesel
- Hitch (pin)
- Turf Tires



Gas-Powered Golf Cart (any brand)

- No battery powered vehicles
- Turf Tires
- Hitch (pin)



REMOVAL OF DEBRIS

It is important to keep your new Sprinturf field free of debris. Often times this can be done with a simple walk-through to pick up items such as discarded athletic tape. At other times, it may be necessary to utilize a sweeper. This is common, for example, if the surrounding area has a lot of trees and leaves fall onto the field of play on a regular basis.

1. A Sprinturf-recommended sweeper should be used to remove debris from the field as needed. Large articles of debris that may clog or damage the equipment should be picked up by hand prior to using the sweeper.
2. Sprinturf recommends sweepers provided by the following manufacturers:

Parker®

<http://www.parkersweeper.com>

- a. **Parker® Estate Master TurfSweeper EM83100M (100")**
- b. **Parker® Suburbanite TurfSweeper SU8336M (36")**



Agri-Fab®

<http://www.agri-fab.com>

- a. **Agri-Fab® Tow Lawn Sweepers**
Model #45-0331 (38")
Model #45-0320 (42")
Model #45-0326 (46")
- b. **Agri-Fab SmartSWEEP™ 44"**



3. When using a Sprinturf recommended sweeper, adjust the broom so that it makes minimal contact with the turf. If the broom is lowered too much, you run the risk of re-moving excessive amounts of infill and disturbing the integrity of the turf system. For this reason, Sprinturf only recommends using a sweeper with a mesh bottom basket to allow the infill mixture to fall back onto the field while picking up litter.
4. It is normal for small amounts of infill to be moved when sweeping the field. This infill is properly redistributed during the regular grooming process.

CLEANING A SPRINTURF FIELD

1. Regular cleaning of your field is not a required maintenance practice. Occasional rainfall will naturally clean your field of dust, pollen and other airborne particles that have settled on the field. Additional steps are not necessary unless a spill takes place.
2. Any spill of a foreign substance or bodily fluids should be removed as quickly as possible, using a solution of non-phosphorous detergent and water (3 ounces of anon-phosphorous detergent, such as Tide®, per 1 gallon of water).
3. Use the approved solution and a soft bristle broom or brush to clean the affected area of the turf.
4. Once the area is clean, flush using clean water to remove any residue from the solution.

What if a large spill penetrates the turf system or a potentially toxic spill occurs (gasoline, motor oil, or hydraulic fuel)?

If a significant spill has penetrated the turf system or if a potentially toxic material is involved, removal of the infill in the affected area may be required. This can be done with an industrial wet/dry vacuum (i.e.: Shop-Vac®). If a spill of this type occurs, contact Sprinturf for further guidance on remediation efforts.

How do I remove. . . .?

Lipstick, scuff marks, suntan lotion and pen ink

Using a light spray of WD-40® and a clean rag, scrub the area thoroughly. Once the stain is removed, rinse the area with clean water to remove any residue left from the solution.

Tar and/or asphalt

Scrape the area using a spatula-like tool and then clean using a sponge or soft bristle brush and if necessary, a light spray of WD-40. Once the stain is removed, rinse the area with clean water to remove any residue left from the solution.

Chewing gum

Use a surface coolant such as an athletic cold spray to first freeze the gum on the surface and then scrape using a spatula-like tool.

Animal Waste

Remove and dispose of the waste. Neutralize the area with a mixture of white distilled vinegar in an equal amount of water. Rinse thoroughly with water after removal.



DISINFECTING YOUR SPRINTURF FIELD

If environmental conditions or external causes warrant disinfecting your synthetic turf field, Sprinturf recommends the use of disinfectant solutions manufactured by Pioneer® Athletics. Pioneer also provides several options and an antimicrobial solution as well.

Products can be purchased directly through your local Pioneer representative or by contacting Pioneer Athletics at **800-877-1500**.

FIELD MARKINGS

While most sports lines will be permanently tufted or in-laid in your new field, there may be a need for additional or temporary markings which will require the use of a temporary paint application. For best results, Sprinturf recommends the use of Pioneer® Athletics line of removable synthetic turf paints.

Temporary Paints

Pioneer® GameLine™ Temporary Aerosol - Ideal for a one game application. Acts similarly to a chalk application on a natural grass surface and can be used in temperatures below 40°F.

Pioneer® GameLine™ - Lasts up to one week depending on traffic and weather conditions.

Pioneer® SeasonLine™ - Lasts up to a full season



General Guidelines

1. Apply field markings when the surface is dry and clean. This will allow the paint to more readily adhere to the polyethylene fibers.
2. Apply any temporary marking lightly and evenly for the best performance and the least impact on your synthetic turf surface.
3. For best results, paint should be applied when the air temperature is between 65°-85°F.
4. Sprinturf recommends having Pioneer's Blitz-GameLine Solution on hand before any application in case of accidental spills or mistakes. This will quickly and easily remove the temporary paint.

For additional details on painting your Sprinturf field, visit www.syntheticurfpaint.com.

REPAIRS

While your field is relatively maintenance-free, you may occasionally find a loose seam, hash mark or line in need of repair.

1. Report any repair necessary to your Sprinturf Customer Care manager. This allows Sprinturf to maintain a log of any repaired areas on the field that can be inspected by a Sprinturf representative during our next site visit to your facility.

CUSTOMER CARE:

(email) customercare@sprinturf.com

(phone) 888-524-6017

(fax) 843-284-8823

ALL FORMS SHOULD BE EMAILED OR FAXED

2. Minor repairs due to normal wear and tear may be corrected by the Owner's maintenance staff by following the procedures below. Minor repairs are defined as an unfastened area of less than 16" in length.
 - While lifting the unfastened edge of the repair, remove and collect the infill of sand and/or rubber that has migrated under the turf with a relatively clean shop vacuum. This will expose the now debris free, seaming tape that anchors the turf.
 - Using a caulking gun, apply a 1/2" (pinky sized) bead of adhesive to the seaming tape. The bead of glue should be applied approximately 1/2" from the edge of the seam to avoid excessive squeeze out.
 - Firmly press the unfastened edge of the turf into the adhesive along the seam. Apply a sandbag or other weight for 3 to 4 hours to ensure good adhesion.
 - Remove the sand bag and pour the collected infill from the shop vacuum directly to seam area. Work the infill into the grass blades with your fingertips. A stiff bristle broom may be used to finish the grooming and complete the repair.
 - Approved adhesives: Any product sent by a Sprinturf representative or available at Home Depot and other retailers, Loctite—PL Premium 3X in caulking tubes.
3. Larger areas of damage due to vandalism or other outside causes may require the use of a Sprinturf repair crew. Using the enclosed Field Diagram/Repair Request Form, provide as much detail of the repair area as possible—include pictures of the areas if possible. Once Sprinturf receives the request, your Customer Care Manager will contact you to schedule the repairs or recommend proper remediation steps.

SNOW REMOVAL

Snow removal is possible with your new synthetic turf field, however, extreme caution and proper operator training is required.

1. Any equipment used for snow removal must first be approved by Sprinturf.
2. To avoid significant rubber displacement or tears in the surface during the plowing process, Sprinturf requires the use of a PVC pipe attached to cover the blade as ***shown in the photo to the right.***
3. If using a snow plow, it is imperative that the blade is lifted enough so that it DOES NOT touch the surface during plowing. The plow blade with PVC attachment should be positioned on the surface gently using a properly adjusted hydraulic mechanism about ½" to 1" above the turf. Take care not to drag the plow directly across the surface which may result in rubber displacement, fiber removal or damage to the system.
4. Plow from the center of the field towards the sidelines; pushing snow into piles outside of the field of play, but if possible, not off of the turf area. Normal plowing activities will displace some rubber that will be noticeable as the snow melts. Simply brush the rubber back into the field of play and fill any areas that may seem low or uneven.
5. Snow removal with a plow may leave track marks on the surface due to the weight of the equipment. Once the field is dry, these can be brushed out with a brush or using your standard grooming equipment.
6. It is important that plowing takes place often during a snow fall to avoid more than a 2" accumulation on the turf at any time. For colder regions that receive large amounts of snow, please call your Customer Care manager for recommendations.
7. Remember, a small layer of snow will melt once the turf is exposed to sunlight. Use a shovel to clear a small area on the turf and the sun will begin the melting process almost immediately.
8. In extreme cases, ice can be removed by spreading a piled fertilizer grade urea over the field using a broadcast spreader at a rate of 100lbs per every 3,000 square feet. This treatment will be effective in temperatures between 15°F and 32°F and should melt up to 1" of ice per hour.



DO NOT . . .

1. Use chains or studded tires under any circumstance.
2. Park equipment on the turf surface for any length of time.
3. Attempt to remove ice from the field with a plow.
4. Use ice melting agents such as rock salt or calcium chloride on your playing surface.

KEEP YOUR FIELD IN PRISTINE CONDITION

- Walk your field regularly and inspect it for any necessary repairs. Report and repair them right away.
- Encourage players to walk the field after each practice or game and simply pick up any trash or debris found on the field.
- Groom the field on a regular basis as outlined in this manual. This keeps the fibers standing tall and your field in optimal playing condition.
- Promote even wear on your field to avoid excessive use of specific areas such as goalmouths. If possible, alternate practices on different sections of the field.

For example: Due to the repetitive nature of the marching band, encourage practices to alternate from the home side to the visitor side. This will avoid excessive wear on hash marks and yard lines.

- Pay special attention to areas that get repetitive wear and when the infill looks low from displacement, brush in infill from higher surrounding areas to even out the level of infill.
- The warnings and recommendations in your Maintenance Manual are for your protection. Improper use of your Sprinturf field may void your warranty.



Do **NOT** allow the following under any circumstance

- **Sunflower seeds or tobacco products**
These products will become trapped in the infill system and are too large to evacuate properly and too small to be picked up by regular grooming.
- **Metal cleats or track spikes**
Metal cleats and spikes are harmful to your surface and can cause premature wear and tear on the fibers and may even puncture the backing system.
- **Pressure washer systems**
Using pressure washers will displace infill and can cause damage to the turf system.
- **Wire bristle brushes or brooms**
These tools will damage turf fibers and cause premature wear of the surface area. Bristles may also come loose, leaving behind potentially dangerous debris.
- **Harsh chemicals, ammonia, bleach and similar products**
These products are detrimental to your synthetic turf field and will void the manufacturer's warranty. If you are unsure about using a cleaning product on your field, consult your Sprinturf customer care manager before use.

SPRINTURF SUGGESTED RULES

Sprinturf has provided several “Sprinturf Rules” signs for your benefit and use. We recommend that these be placed at all entrances to create awareness and enforce compliance by all users of the field. If you do not have a Rules sign or would like to purchase additional signs, please contact Customer Care at **888-524-6017**.

Sprinturf Rules of the Field

- **Molded cleats or other athletic shoes only**
- **No sharp objects – including tent stakes, corner flags or other objects that can penetrate the surface of the field**
- **No food items – including gum and sunflower seeds**
- **No tobacco products of any kind**
- **No sports drinks or liquids other than water**
- **No pets**
- **No bicycles or unapproved vehicles**
- **Approved athletic equipment only**



Weekly Field Maintenance Checklist

- ☐ Keep the field clean of debris at all times.
- ☐ Place trash receptacles strategically around the field to encourage cleanliness.
- ☐ Keep vehicles off of the surface as much as possible.
- ☐ Control access to the field to avoid vandalism and improper use.
- ☐ Report any damage or issues needing attention to Sprinturf immediately.
- ☐ Post “Sprinturf Rules” signs at all entrances.



CONTACT INFORMATION

550 LONG POINT RD, SUITE 205, MT PLEASANT, SC 29494 • CUSTOMERCARE@SPRINTURF.COM • PHONE: 888- 524-6017

Project Name: _____

Site Address: _____

Name

Title

Phone

*** Primary Contact:** _____

Email Address: _____

Additional Contacts: _____

Email Address: _____

Email Address: _____

*The Primary Contact should be the person that our Customer Service Representative can contact to coordinate any repair work or scheduled maintenance on your field.

Name

Phone

Email Address:

Athletic Director: _____

Facilities Director: _____

Maintenance Director: _____

Please fax back to 843-284-8823 ATTN: Customer Care OR Email: customer care@sprinturf.com



DIRECTIONS: As accurately as possible, use an **X** to mark any areas in need of repair. For fields with multiple sports lines, it may also be necessary to use one of the configurations for other sports markings, on the following pages.

Today's Date: _____

Field or School Name: _____

Contact: _____ **Title:** _____

Site Address: _____

Cell Phone: _____ **Office Phone:** _____

Office Phone: _____

Email Address:

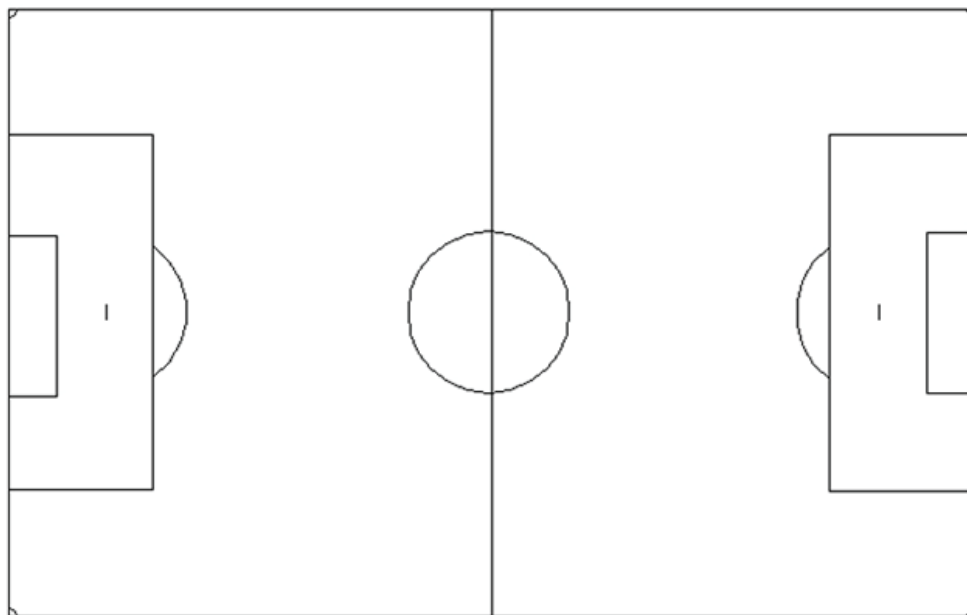
DESCRIPTION:

Field Under Warranty

Own Attic Stock/Infill

PLEASE ATTACH PHOTOS, IF AVAILABLE

Email: customer care@sprinturf.com OR Fax: 843-284-8823 ATTN: Customer Care



DIRECTIONS: As accurately as possible, use an **X** to mark any areas in need of repair. For fields with multiple sports lines, it may also be necessary to use one of the configurations for other sports markings, on the following pages.

CONTACT INFORMATION

Today's Date: _____

Field or School Name: _____

Contact: _____ **Title:** _____

Site Address: _____

Cell Phone: _____ **Office Phone:** _____

Email Address: _____

DESCRIPTION:

☐

Field Under Warranty

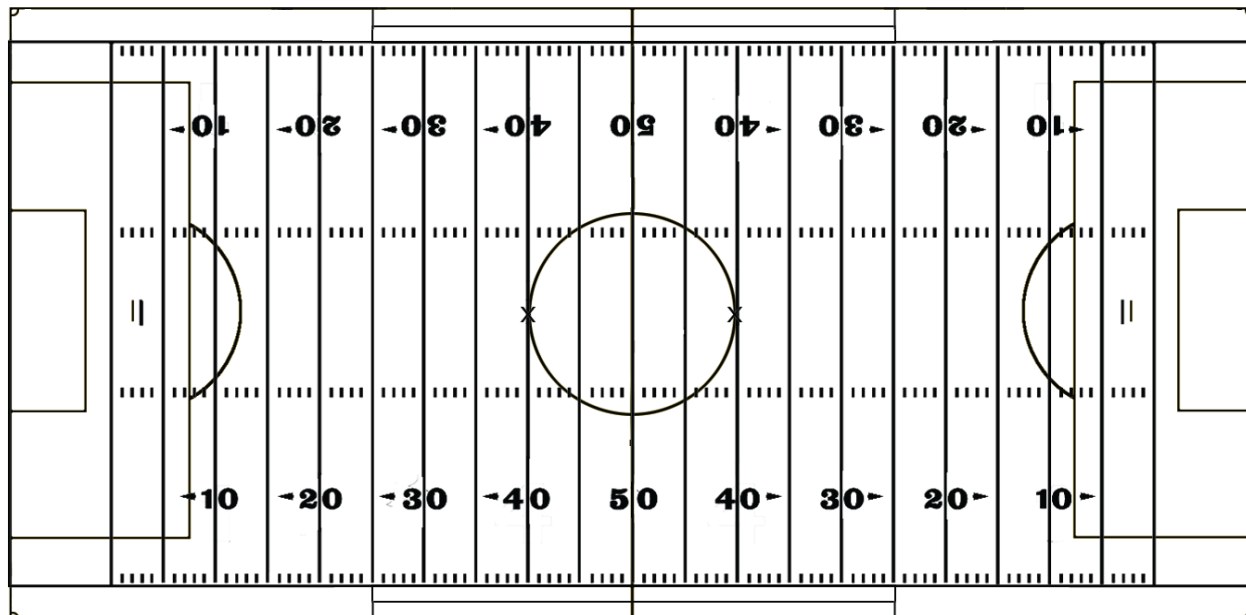
☐

Own Attic Stock/Infill

PLEASE ATTACH PHOTOS, IF AVAILABLE



REPAIR FORM FOOTBALL / SOCCER FIELD



DIRECTIONS: As accurately as possible, use an **X** to mark any areas in need of repair. For fields with multiple sports lines, it may also be necessary to use one of the configurations for other sports markings, on the following pages.

CONTACT INFORMATION

Today's Date: _____

Field or School Name: _____

Contact: _____ **Title:** _____

Site Address: _____

Cell Phone: _____ **Office Phone:** _____

Email Address: _____

DESCRIPTION:

☐

Field Under Warranty

☐

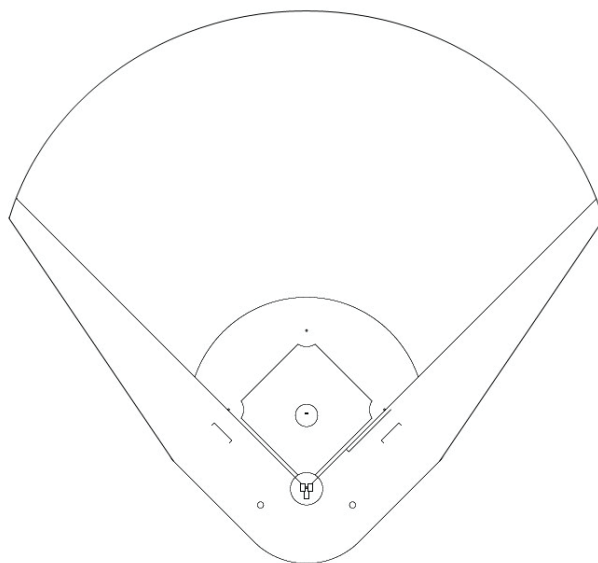
Own Attic Stock/Infill

PLEASE ATTACH PHOTOS, IF AVAILABLE

Email: customercare@sprinturf.com **OR Fax:** 843-284-8823 **ATTN:** Customer Care



REPAIR FORM BASEBALL / SOFTBALL FIELD



DIRECTIONS: As accurately as possible, use an **X** to mark any areas in need of repair. For fields with multiple sports lines, it may also be necessary to use one of the configurations for other sports markings, on the following pages.

CONTACT INFORMATION

Today's Date: _____

Field or School Name: _____

Contact: _____ **Title:** _____

Site Address: _____

Cell Phone: _____ **Office Phone:** _____

Email Address: _____

DESCRIPTION:

☐

Field Under Warranty

☐

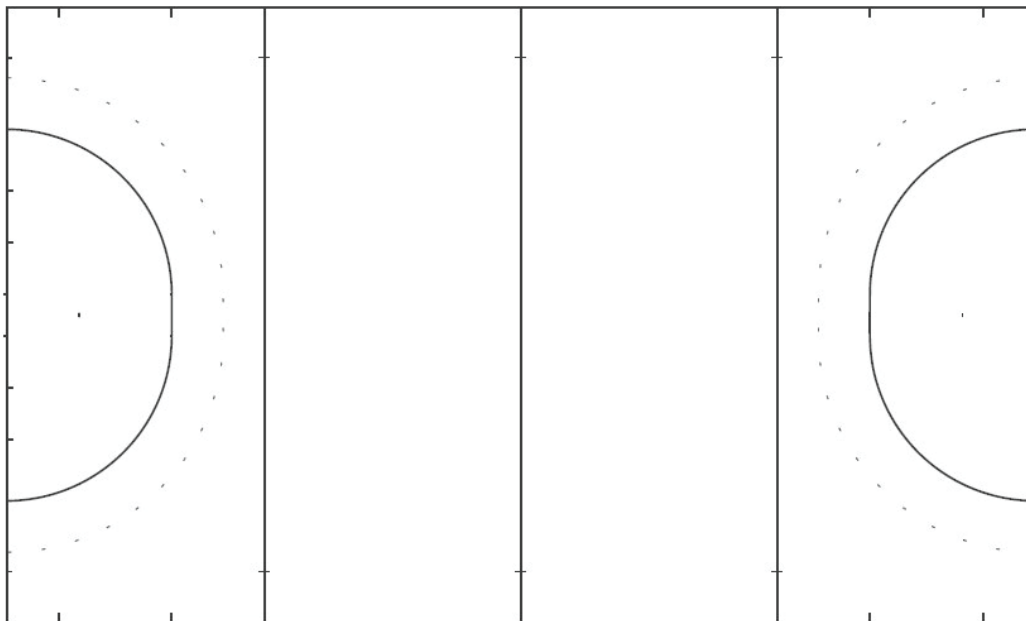
Own Attic Stock/Infill

PLEASE ATTACH PHOTOS, IF AVAILABLE

Email: customercare@sprinturf.com OR Fax: 843-284-8823 ATTN: Customer Care



REPAIR FORM FIELD HOCKEY FIELD



DIRECTIONS: As accurately as possible, use an **X** to mark any areas in need of repair. For fields with multiple sports lines, it may also be necessary to use one of the configurations for other sports markings, on the following pages.

CONTACT INFORMATION

Today's Date: _____

Field or School Name: _____

Contact: _____ **Title:** _____

Site Address: _____

Cell Phone: _____ **Office Phone:** _____

Email Address: _____

DESCRIPTION:

☐

Field Under Warranty

☐

Own Attic Stock/Infill

PLEASE ATTACH PHOTOS, IF AVAILABLE

Email: customercare@sprinturf.com OR Fax: 843-284-8823 ATTN: Customer Care

MEN'S LACROSSE

WOMEN'S LACROSSE

DIRECTIONS: As accurately as possible, use an **X** to mark any areas in need of repair. For fields with multiple sports lines, it may also be necessary to use one of the configurations for other sports markings, on the following pages.



ROUTINE MAINTENANCE LOG

NAME OF FIELD: _____

DATE	TYPE OF MAINTENANCE	ADDITIONAL NOTES
	<input type="checkbox"/> Cleaning <input type="checkbox"/> Grooming <input type="checkbox"/> Snow Removal <input type="checkbox"/> Other _____	
	<input type="checkbox"/> Cleaning <input type="checkbox"/> Grooming <input type="checkbox"/> Snow Removal <input type="checkbox"/> Other _____	
	<input type="checkbox"/> Cleaning <input type="checkbox"/> Grooming <input type="checkbox"/> Snow Removal <input type="checkbox"/> Other _____	
	<input type="checkbox"/> Cleaning <input type="checkbox"/> Grooming <input type="checkbox"/> Snow Removal <input type="checkbox"/> Other _____	
	<input type="checkbox"/> Cleaning <input type="checkbox"/> Grooming <input type="checkbox"/> Snow Removal <input type="checkbox"/> Other _____	
	<input type="checkbox"/> Cleaning <input type="checkbox"/> Grooming <input type="checkbox"/> Snow Removal <input type="checkbox"/> Other _____	
	<input type="checkbox"/> Cleaning <input type="checkbox"/> Grooming <input type="checkbox"/> Snow Removal <input type="checkbox"/> Other _____	
	<input type="checkbox"/> Cleaning <input type="checkbox"/> Grooming <input type="checkbox"/> Snow Removal <input type="checkbox"/> Other _____	
	<input type="checkbox"/> Cleaning <input type="checkbox"/> Grooming <input type="checkbox"/> Snow Removal <input type="checkbox"/> Other _____	



ROUTINE MAINTENANCE LOG

NAME OF FIELD: _____

DATE	TYPE OF MAINTENANCE	ADDITIONAL NOTES
	<input type="checkbox"/> Cleaning <input type="checkbox"/> Grooming <input type="checkbox"/> Snow Removal <input type="checkbox"/> Other _____	
	<input type="checkbox"/> Cleaning <input type="checkbox"/> Grooming <input type="checkbox"/> Snow Removal <input type="checkbox"/> Other _____	
	<input type="checkbox"/> Cleaning <input type="checkbox"/> Grooming <input type="checkbox"/> Snow Removal <input type="checkbox"/> Other _____	
	<input type="checkbox"/> Cleaning <input type="checkbox"/> Grooming <input type="checkbox"/> Snow Removal <input type="checkbox"/> Other _____	
	<input type="checkbox"/> Cleaning <input type="checkbox"/> Grooming <input type="checkbox"/> Snow Removal <input type="checkbox"/> Other _____	
	<input type="checkbox"/> Cleaning <input type="checkbox"/> Grooming <input type="checkbox"/> Snow Removal <input type="checkbox"/> Other _____	
	<input type="checkbox"/> Cleaning <input type="checkbox"/> Grooming <input type="checkbox"/> Snow Removal <input type="checkbox"/> Other _____	
	<input type="checkbox"/> Cleaning <input type="checkbox"/> Grooming <input type="checkbox"/> Snow Removal <input type="checkbox"/> Other _____	
	<input type="checkbox"/> Cleaning <input type="checkbox"/> Grooming <input type="checkbox"/> Snow Removal <input type="checkbox"/> Other _____	
	<input type="checkbox"/> Cleaning <input type="checkbox"/> Grooming <input type="checkbox"/> Snow Removal <input type="checkbox"/> Other _____	



ROUTINE MAINTENANCE LOG

NAME OF FIELD: _____

DATE	TYPE OF MAINTENANCE	ADDITIONAL NOTES
	<input type="checkbox"/> Cleaning <input type="checkbox"/> Grooming <input type="checkbox"/> Snow Removal <input type="checkbox"/> Other _____	
	<input type="checkbox"/> Cleaning <input type="checkbox"/> Grooming <input type="checkbox"/> Snow Removal <input type="checkbox"/> Other _____	
	<input type="checkbox"/> Cleaning <input type="checkbox"/> Grooming <input type="checkbox"/> Snow Removal <input type="checkbox"/> Other _____	
	<input type="checkbox"/> Cleaning <input type="checkbox"/> Grooming <input type="checkbox"/> Snow Removal <input type="checkbox"/> Other _____	
	<input type="checkbox"/> Cleaning <input type="checkbox"/> Grooming <input type="checkbox"/> Snow Removal <input type="checkbox"/> Other _____	
	<input type="checkbox"/> Cleaning <input type="checkbox"/> Grooming <input type="checkbox"/> Snow Removal <input type="checkbox"/> Other _____	
	<input type="checkbox"/> Cleaning <input type="checkbox"/> Grooming <input type="checkbox"/> Snow Removal <input type="checkbox"/> Other _____	
	<input type="checkbox"/> Cleaning <input type="checkbox"/> Grooming <input type="checkbox"/> Snow Removal <input type="checkbox"/> Other _____	
	<input type="checkbox"/> Cleaning <input type="checkbox"/> Grooming <input type="checkbox"/> Snow Removal <input type="checkbox"/> Other _____	



ROUTINE MAINTENANCE LOG

NAME OF FIELD: _____

DATE	TYPE OF MAINTENANCE	ADDITIONAL NOTES
	<input type="checkbox"/> Cleaning <input type="checkbox"/> Grooming <input type="checkbox"/> Snow Removal <input type="checkbox"/> Other _____	
	<input type="checkbox"/> Cleaning <input type="checkbox"/> Grooming <input type="checkbox"/> Snow Removal <input type="checkbox"/> Other _____	
	<input type="checkbox"/> Cleaning <input type="checkbox"/> Grooming <input type="checkbox"/> Snow Removal <input type="checkbox"/> Other _____	
	<input type="checkbox"/> Cleaning <input type="checkbox"/> Grooming <input type="checkbox"/> Snow Removal <input type="checkbox"/> Other _____	
	<input type="checkbox"/> Cleaning <input type="checkbox"/> Grooming <input type="checkbox"/> Snow Removal <input type="checkbox"/> Other _____	
	<input type="checkbox"/> Cleaning <input type="checkbox"/> Grooming <input type="checkbox"/> Snow Removal <input type="checkbox"/> Other _____	
	<input type="checkbox"/> Cleaning <input type="checkbox"/> Grooming <input type="checkbox"/> Snow Removal <input type="checkbox"/> Other _____	
	<input type="checkbox"/> Cleaning <input type="checkbox"/> Grooming <input type="checkbox"/> Snow Removal <input type="checkbox"/> Other _____	
	<input type="checkbox"/> Cleaning <input type="checkbox"/> Grooming <input type="checkbox"/> Snow Removal <input type="checkbox"/> Other _____	



ROUTINE MAINTENANCE LOG

NAME OF FIELD: _____

DATE	TYPE OF MAINTENANCE	ADDITIONAL NOTES
	<input type="checkbox"/> Cleaning <input type="checkbox"/> Grooming <input type="checkbox"/> Snow Removal <input type="checkbox"/> Other _____	
	<input type="checkbox"/> Cleaning <input type="checkbox"/> Grooming <input type="checkbox"/> Snow Removal <input type="checkbox"/> Other _____	
	<input type="checkbox"/> Cleaning <input type="checkbox"/> Grooming <input type="checkbox"/> Snow Removal <input type="checkbox"/> Other _____	
	<input type="checkbox"/> Cleaning <input type="checkbox"/> Grooming <input type="checkbox"/> Snow Removal <input type="checkbox"/> Other _____	
	<input type="checkbox"/> Cleaning <input type="checkbox"/> Grooming <input type="checkbox"/> Snow Removal <input type="checkbox"/> Other _____	
	<input type="checkbox"/> Cleaning <input type="checkbox"/> Grooming <input type="checkbox"/> Snow Removal <input type="checkbox"/> Other _____	
	<input type="checkbox"/> Cleaning <input type="checkbox"/> Grooming <input type="checkbox"/> Snow Removal <input type="checkbox"/> Other _____	
	<input type="checkbox"/> Cleaning <input type="checkbox"/> Grooming <input type="checkbox"/> Snow Removal <input type="checkbox"/> Other _____	
	<input type="checkbox"/> Cleaning <input type="checkbox"/> Grooming <input type="checkbox"/> Snow Removal <input type="checkbox"/> Other _____	
	<input type="checkbox"/> Cleaning <input type="checkbox"/> Grooming <input type="checkbox"/> Snow Removal <input type="checkbox"/> Other _____	



ROUTINE MAINTENANCE LOG

NAME OF FIELD: _____

DATE	TYPE OF MAINTENANCE	ADDITIONAL NOTES
	<input type="checkbox"/> Cleaning <input type="checkbox"/> Grooming <input type="checkbox"/> Snow Removal <input type="checkbox"/> Other _____	
	<input type="checkbox"/> Cleaning <input type="checkbox"/> Grooming <input type="checkbox"/> Snow Removal <input type="checkbox"/> Other _____	
	<input type="checkbox"/> Cleaning <input type="checkbox"/> Grooming <input type="checkbox"/> Snow Removal <input type="checkbox"/> Other _____	
	<input type="checkbox"/> Cleaning <input type="checkbox"/> Grooming <input type="checkbox"/> Snow Removal <input type="checkbox"/> Other _____	
	<input type="checkbox"/> Cleaning <input type="checkbox"/> Grooming <input type="checkbox"/> Snow Removal <input type="checkbox"/> Other _____	
	<input type="checkbox"/> Cleaning <input type="checkbox"/> Grooming <input type="checkbox"/> Snow Removal <input type="checkbox"/> Other _____	
	<input type="checkbox"/> Cleaning <input type="checkbox"/> Grooming <input type="checkbox"/> Snow Removal <input type="checkbox"/> Other _____	
	<input type="checkbox"/> Cleaning <input type="checkbox"/> Grooming <input type="checkbox"/> Snow Removal <input type="checkbox"/> Other _____	
	<input type="checkbox"/> Cleaning <input type="checkbox"/> Grooming <input type="checkbox"/> Snow Removal <input type="checkbox"/> Other _____	



ROUTINE MAINTENANCE LOG

NAME OF FIELD: _____

DATE	TYPE OF MAINTENANCE	ADDITIONAL NOTES
	<input type="checkbox"/> Cleaning <input type="checkbox"/> Grooming <input type="checkbox"/> Snow Removal <input type="checkbox"/> Other _____	
	<input type="checkbox"/> Cleaning <input type="checkbox"/> Grooming <input type="checkbox"/> Snow Removal <input type="checkbox"/> Other _____	
	<input type="checkbox"/> Cleaning <input type="checkbox"/> Grooming <input type="checkbox"/> Snow Removal <input type="checkbox"/> Other _____	
	<input type="checkbox"/> Cleaning <input type="checkbox"/> Grooming <input type="checkbox"/> Snow Removal <input type="checkbox"/> Other _____	
	<input type="checkbox"/> Cleaning <input type="checkbox"/> Grooming <input type="checkbox"/> Snow Removal <input type="checkbox"/> Other _____	
	<input type="checkbox"/> Cleaning <input type="checkbox"/> Grooming <input type="checkbox"/> Snow Removal <input type="checkbox"/> Other _____	
	<input type="checkbox"/> Cleaning <input type="checkbox"/> Grooming <input type="checkbox"/> Snow Removal <input type="checkbox"/> Other _____	
	<input type="checkbox"/> Cleaning <input type="checkbox"/> Grooming <input type="checkbox"/> Snow Removal <input type="checkbox"/> Other _____	
	<input type="checkbox"/> Cleaning <input type="checkbox"/> Grooming <input type="checkbox"/> Snow Removal <input type="checkbox"/> Other _____	



ROUTINE MAINTENANCE LOG

NAME OF FIELD: _____

DATE	TYPE OF MAINTENANCE	ADDITIONAL NOTES
	<input type="checkbox"/> Cleaning <input type="checkbox"/> Grooming <input type="checkbox"/> Snow Removal <input type="checkbox"/> Other _____	
	<input type="checkbox"/> Cleaning <input type="checkbox"/> Grooming <input type="checkbox"/> Snow Removal <input type="checkbox"/> Other _____	
	<input type="checkbox"/> Cleaning <input type="checkbox"/> Grooming <input type="checkbox"/> Snow Removal <input type="checkbox"/> Other _____	
	<input type="checkbox"/> Cleaning <input type="checkbox"/> Grooming <input type="checkbox"/> Snow Removal <input type="checkbox"/> Other _____	
	<input type="checkbox"/> Cleaning <input type="checkbox"/> Grooming <input type="checkbox"/> Snow Removal <input type="checkbox"/> Other _____	
	<input type="checkbox"/> Cleaning <input type="checkbox"/> Grooming <input type="checkbox"/> Snow Removal <input type="checkbox"/> Other _____	
	<input type="checkbox"/> Cleaning <input type="checkbox"/> Grooming <input type="checkbox"/> Snow Removal <input type="checkbox"/> Other _____	
	<input type="checkbox"/> Cleaning <input type="checkbox"/> Grooming <input type="checkbox"/> Snow Removal <input type="checkbox"/> Other _____	
	<input type="checkbox"/> Cleaning <input type="checkbox"/> Grooming <input type="checkbox"/> Snow Removal <input type="checkbox"/> Other _____	

SPRINTURF *SprintCare*

SYNTHETIC TURF MAINTENANCE PROGRAM



A Sprinturf synthetic turf playing surface is one the best investments you can make to help ensure the safety of your athletes and meet the extreme usage demands of today's athletic facilities. While a Sprinturf synthetic field requires much less maintenance than an ordinary grass field, you, your athletes and your field will benefit from participating in the SprintCare Synthetic Turf Maintenance Program. With your participation in this program you have the peace of mind that your field will receive the proper care it needs to provide the maximum safety for your athletes. Additionally, the SprintCare Maintenance Program will help ensure your field lasts well past it's normal replacement cycle.

Note: Maintenance can only be performed in the spring and fall seasons.



MAINTENANCE VISIT INCLUDES:

- 1 CLEAN & REDISTRIBUTE INFILL**
Clean and redistributes infill evenly
- 2 FIELD BRUSHING**
Brushing alleviates compaction and reinvigorates fibers
- 3 FIELD INSPECTION**
Careful inspection of the field and remediation of seams, numbers or logos, if necessary
- 4 INFILL DEPTH TESTING**
Infill depth testing with a remediation recommendation
- 5 WRITTEN REPORT**
Detailed written report for owners record
- 6 GMAX TESTING**
Gmax testing for field safety. (Available for additional cost)

877.686.8873 • WWW.SPRINTURF.COM

SPRINTURF®

Headquarters:
550 Long Point Road
Suite 205
Mount Pleasant, SC 29464

T: 843-936-6023
F: 843-284-8823

Manufacturing Facilities:
799 Industrial Drive
Chatsworth, GA 30705
170 Rice Ave
Dadeville, AL 36853